



60 YEARS OF PROGRESS



SPRING AND SUMMER • 1935

MAC LEANS
Sporting Goods Store

1935

Goldsmith Fielders' Gloves

Ethan Allen

Model EA—Used by Ethan Allen, hard hitting outfielder of the Philadelphia Nationals. "V"-type back with strap and buckle. Finest Flexo Gluv-Hide, fully lined with horsehide. Medium length fingers, well padded in heel, thumb and little finger, deep ball pocket. Leather welted diverted finger seams, leather bound, leather laced wrist with metal eyelets. Double tunnel web with rawhide lacing between thumb and forefinger. Inner processed (greased) palm. Each, \$9.35



Model EA

Ethan Allen stepped into the Major Leagues from the University of Cincinnati team in 1926. In 1930 he was traded to New York and in 1932 to St. Louis, going to the Philadelphia Nationals in 1934. He was an outstanding hitter in 1934, his batting average being .331.

Red Lucas

Model RL—Endorsed by Red Lucas of the Pittsburgh Pirates. Built on fairly broad lines with medium length fingers. Flexo Gluv-Hide with full horsehide lining. Leather welted diverted finger seams, leather laced wrist with metal eyelets. Double tunnel leather web with rawhide lacing between thumb and forefinger. Inner processed (greased) palm. . . Each, \$9.35

Red Lucas began his professional career with Nashville in 1920. Sold to New York Nationals in September, 1922, with Boston Nationals in 1923-25, with Cincinnati from 1925-33, and traded to Pittsburgh in 1933. During the past season with Pittsburgh, Lucas won 10 and lost 9.



Model RL

Goldsmith Fielders' Gloves

Valdes Modelo

Model VM—A very popular model with a patented lacing device for adjusting fingers and ball pocket. Leather laces which join first, second, and third fingers permit the wearer to adjust the glove to his own individual taste. Professional size, made of selected Flexo Gluv-Hide and fully lined with genuine horsehide. Leather welted seams, diverted finger seams, leather bound, leather laced wrist with metal eyelets. Leather tunnel web between thumb and forefinger. Inner processed (greased) palm. Each, \$8.50



Model VM

1935



Model KB

"Chick" Hafey

Model KB—"Chick" Hafey. Endorsed by "Chick" Hafey of the Cincinnati Reds. Full size, long finger model. Made of selected Flexo Gluv-Hide and fully lined with genuine horsehide. Well padded in heel, thumb, and little finger. Deep ball pocket, leather welted diverted finger seams. Leather bound, leather laced wrist with metal eyelets. Double tunnel web between thumb and forefinger laced through metal eyelets. Inner processed (greased) palm. Each, \$8.50

"Chick" Hafey signed with Syracuse in 1923, sold to St. Louis Nationals in 1924. Playing continuously with the Cardinals he earned a reputation as a heavy hitter, at one time leading the National League in batting. Traded to Cincinnati in 1932. Batting average for 1934 was .292.

1935

1875 **60** 1935
YEARS OF PROGRESS



"THE FLASH"

For Championship
Performance!

Model LD *Leo Durocher* Each, \$7.25

Used by Leo Durocher, flashy shortstop of the Champion St. Louis Cardinals. A professional model made of genuine Flexo Gluv-Hide and fully lined with genuine horsehide. Leather bound, leather laced wrist with metal eyelets, leather welted diverted finger seams. Double tunnel web with rawhide lacing between thumb and forefinger. Well padded in heel, thumb, and little finger, deep ball pocket. Inner processed (greased) palm.

Leo Durocher, flashy shortstop of the St. Louis Cardinals and who played such winning ball in the 1934 World Series, began his baseball career with Hartford in 1925. Sold to New York Americans in 1925, he was recalled by the New York Americans, where he played during 1927-28-29-30. With Cincinnati from 1930-33 and with the St. Louis Nationals in 1933-34. Durocher is known as the finest fielding shortstop in the Major League and is a light, though dangerous hitter. Batting average in 1934 was .258.

Goldsmith Fielders Gloves

Melvin
Ott

Model MO
Each, \$6.00

Mel Ott, leading slugger of the New York Nationals, was signed by the Giants in 1926 and has played with them continuously since that time. During his entire career with the Giants he has been a consistent hitter and a sterling fielder. His batting average for 1934 was .325.



Model MO—Endorsed by Melvin Ott of the New York Giants. "V" type back with leather strap and buckle. Made of selected Flexo Gluv-Hide and full leather lined. Leather welted seams and diverted finger seams, leather laced wrist with metal eyelets, leather laced between thumb and forefinger. Well padded in heel, thumb and little finger. Each, \$6.00



Model HL



No. G35

Model HL—A fine professional model glove at a nominal price. Built on fairly broad lines with medium length fingers. Made of genuine Flexo Gluv-Hide and full leather lined, inner processed (greased) palm. Leather welted seams and diverted finger seams, laced wrist with metal eyelets. Leather tunnel web with rawhide lace between thumb and forefinger. Well padded in thumb, heel and little finger, lightly in palm. Each, \$5.00

No. G35—A professional model with "V" type back with leather strap and buckle. Genuine Flexo Gluv-Hide, full leather lined. Inner processed (greased) palm. Leather welted seams and diverted finger seams. Leather laced wrist with metal eyelets. Rawhide lacing between thumb and forefinger, laced through metal eyelets. Deep natural ball pocket. Each, \$4.50

1935

1935

1875 60 YEARS OF PROGRESS 1935



No. G25



No. G20

Goldsmith Fielders' Gloves



No. G15

- No. G25—Professional model. Genuine Flexo Gluv-Hide, full leather lined. Leather laced wrist with metal eyelets. Laced between thumb and forefinger through metal eyelets. Inner processed (greased) palm. Well padded. Each, \$3.50
- No. G20—Waite J. Hoyt Model. Flexo Gluv-Hide with full leather lining, inner processed (greased) palm. Leather welted seams, diverted finger seams, laced wrist with metal eyelets. Lacing between thumb and forefinger. Each, \$2.50
- No. G15—Ray Kolp Model. Full size model. Flexo Gluv-Hide with leather lined fingers. Inner processed (greased) palm. Leather welted seams, leather laced wrist. Rawhide lacing between thumb and forefinger. Correctly padded. Each, \$2.00
- No. G10—Medium sized model made of genuine Flexo Gluv-Hide with leather palm pad. Welted seams, lace at wrist with metal eyelets, laced between thumb and forefinger. Well padded. Each, \$1.50
- No. G5—Leader. Junior model. Cream color Flexo Gluv-Hide with leather palm pad. Leather "spider web" between thumb and forefinger. Well padded. Each, \$1.00
- No. G2—Juvenile Model. Cream color Flexo Gluv-Hide with leather palm pad. Leather web between thumb and forefinger. Felt padded palm. Each, \$0.80



No. G10



No. G5



No. G2

1935

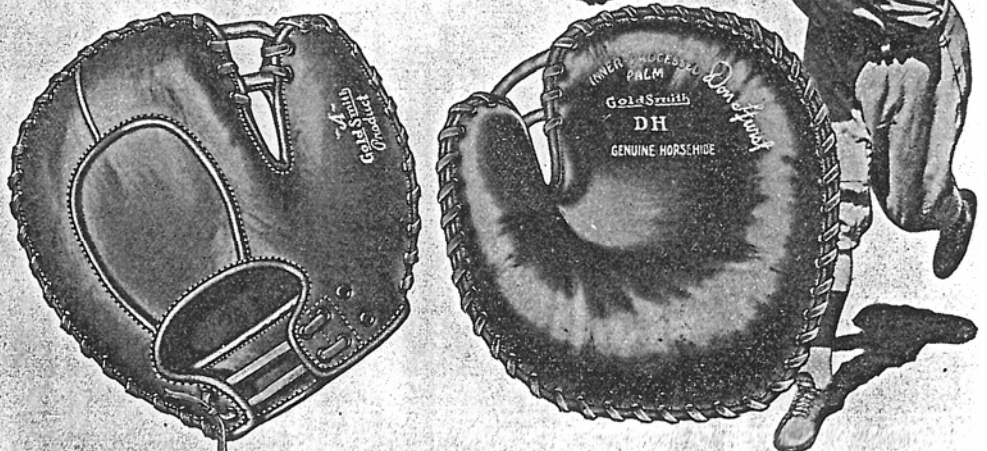
1875 60 YEARS OF PROGRESS 1935



Goldsmith Basemen's Mitts

Model MH—Mickey Heath—A new design with a distinctive type tunnel web and lacing between thumb and palm which is an aid to accurate fielding. Made of selected golden brown horsehide throughout with horsehide lining. Extremely pliant and flexible inner processed (greased) palm. Hand built asbestos felt pad, professional model panel back with sole leather guard. Leather bound, leather laced edge with metal eyelets. Buckle and strap at wrist. . . . Each, \$11.25

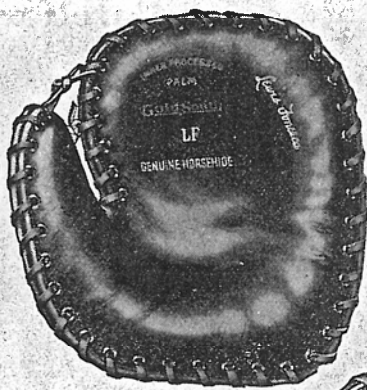
Model DH—Don Hurst. A well balanced mitt used by Don Hurst of the Chicago Nationals. Made of selected flexible tan horsehide, lined with soft kid leather, hand built shaped felt pad. Flexible inner processed (greased) palm, panel back. Full leather laced edge with metal eyelets, double strong roll leather web between thumb and palm. Rawhide lace at wrist with eyelets for adjusting, wool shearling padded wrist protector. Each, \$9.50



1935



Model WP



Model LF

Goldsmith Basemen's Mitts

Model WP—Wally Pipp. Inset thumb. Selected golden brown horsehide lined with soft kid. Inner processed (greased) palm. Hand built felt pad, panel back. Three-quarter leather laced, leather bound edge with metal eyelets, tunnel web between thumb and palm. Reinforced thumb seam. Padded kid lined wrist protector. Each, \$9.50

Model LF—Louis Fonseca. Selected tan horsehide, lined with soft kid. Inner processed (greased) palm. Hand made felt pad, panel back. Leather bound, leather laced edge with metal eyelets, leather lacing between thumb and palm. Wool shearling lined wrist protector. Each, \$7.50

Model BC—Bud Clancy. A flexible model with inset thumb. Genuine tan horsehide lined with soft kid. Inner processed (greased) palm, reinforced thumb seam. Shaped felt pad, panel back, three-quarter leather laced edge with metal eyelets, tunnel loop between thumb and palm. Wool shearling lined wrist protector. Each, \$6.00

Model GG—Geo. Grantham. Palm and fingers made of genuine golden brown horsehide with soft kid lining. Hand shaped felt pad with deep ball pocket. Three-quarter leather laced edge with metal eyelets. Leather laced between thumb and palm. Each, \$5.00

No. B19—Jake E. Daubert. Golden brown horsehide throughout. Inner processed (greased) palm. Three-quarter laced edge with metal eyelets, leather lacing between thumb and palm. Correctly padded, deep ball pocket. Each, \$4.00

No. B14—Professional Model. Genuine tan horsehide throughout. Inner processed (greased) palm. Three-quarter leather laced wrist, leather laced between thumb and palm. Well padded. Each, \$3.00



Model BC



Model GG



Nos. B9-B7

No. B9—League Special. Medium size, genuine tan horsehide. Three-quarter laced edge with metal eyelets. Lace between thumb and palm. Buckle and strap. Each, \$2.25

No. B7—Junior Size. Tan horsehide palm and back, leatherette lining. Three-quarter laced edge with metal eyelets. Lacing between thumb and palm. Each, \$1.50



Nos. B19-B14

1935

1875 60 YEARS OF PROGRESS 1935

Goldsmith Catcher's Mitts



Model ML



Model ML—Made according to specifications of Ernest Lombardi of the Cincinnati Reds. Hand molded, built throughout of the finest golden brown cowhide and double stitched with heavy waxed thread. Layer asbestos felt pad with in-built ball pocket. Inner processed (greased) hand molded palm. Fingers lined with soft flexible glove leather. Rawhide lace at wrist with eyelets for adjusting. Wool shearling padded wrist protector. Leather roll bound rawhide laced edge with metal eyelets. Leather lacing between thumb and palm.....Each, \$16.50



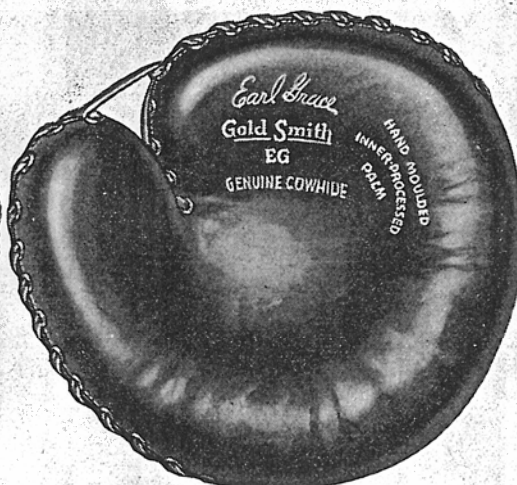
Model M

Model M—"Bubbles" Hargrave. A medium size, hand molded mitt. Selected golden brown cowhide with glove leather lined fingers. Layer asbestos felt pad with built-in ball pocket. Inner processed (greased) molded palm. Rawhide laced, leather bound edge, rawhide lacing between thumb and palm. Rawhide laced wrist with adjusting eyelets. Wool shearling padded wrist protector.....Each, \$16.50

1935



Model WH



Model EG

Goldsmith Catchers' Mitts

Model WH

"Butch" Henline - Each, \$13.50

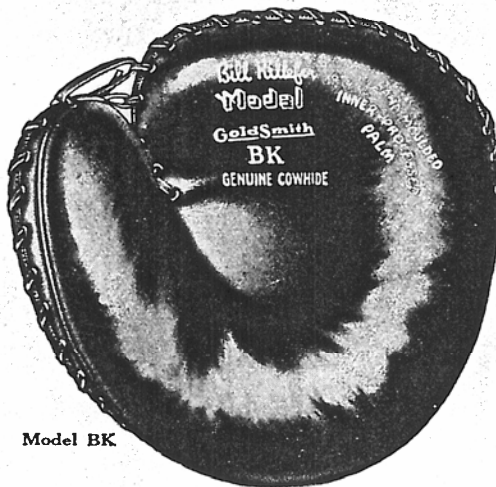
A sturdy mitt built throughout of selected golden brown cowhide. Hand molded felt pad shaped to form a deep ball pocket, inner processed (greased) palm. Rawhide lacing between thumb and palm. Leather bound, leather laced edge with metal eyelets. Buckle and strap at wrist, wool shearling wrist protector.



Model EG

Earl Grace - Each, \$10.50

An exceptionally well balanced, medium size, professional model. Made of selected genuine tan cowhide, molded felt pad with deep in-built ball pocket, inner processed (greased) palm. Leather bound, leather laced edge with metal eyelets, leather lacing between thumb and palm. Patented fastening device at wrist with wool shearling wrist protector.



Model BK

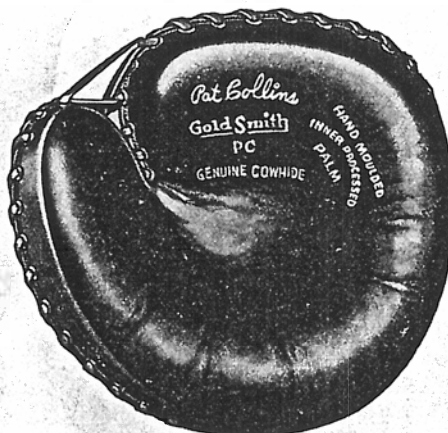
Model BK

Bill Killifer - Each, \$8.50

A sturdy, dependable, well built, professional model made of genuine tan cowhide. Inner processed (greased) palm. Leather bound, leather laced edge with metal eyelets, leather lace between thumb and palm. Deep in-built ball pocket. Buckle and strap at wrist with wool shearling wrist protector.

1935

1875 60 YEARS OF PROGRESS 1935



Model PC



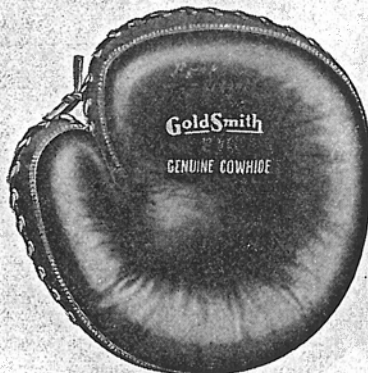
No. C31

Goldsmith Catchers' Mitts

- Model PC—Pat Collins.** A molded professional model. Genuine Golden Brown cowhide throughout, inner processed (greased) palm. Full leather bound rawhide laced edge with metal eyelets. Rawhide lacing between thumb and palm. Well padded with deep ball pocket, buckle and strap at wrist. Each, \$6.50
- No. C31—Medium size scoop model.** Made of genuine Golden Brown cowhide with inner processed (greased) palm. Leather laced edge with metal eyelets, leather lacing between thumb and palm. Buckle and strap at wrist. Each, \$5.00
- No. C26—Golden Brown cowhide.** Inner processed (greased) palm. Leather laced edge with metal eyelets, leather lacing between thumb and palm. Well padded, deep ball pocket. Each, \$4.00
- No. C21—Made of tan cowhide throughout.** Full laced edge with metal eyelets. Lacing between thumb and palm. Well padded, deep ball pocket. Each, \$3.00
- No. C16—Medium size, junior model.** Golden Brown cowhide with leatherette strip. Full laced edge with metal eyelets, lacing between thumb and palm. Buckle and strap at wrist. Each, \$2.00
- No. C11—Juvenile Model.** Golden Brown cowhide palm and fingers. Khaki back, leatherette strip. Lacing between thumb and palm, buckle and strap at wrist. Each, \$1.25



No. C26

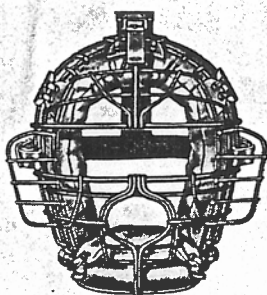


Nos. C21-C16



No. C11

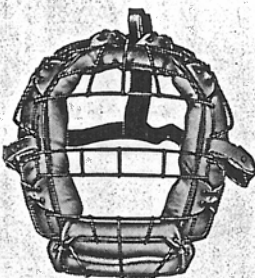
Goldsmith Base Ball—Soft Ball Masks



No. 276



No. 267



No. 261-257



No. 250

No. 276—Open vision style. Preferred by many of the Major League catchers, especially popular with umpires. Ear protecting frame of dull finished, heavy steel wire with welded joints. Soft leather face and chin cushions, laced to frame. Adjustable elastic head straps. Each, \$9.00

No. 274—Open vision style. Light in weight, wide ear protecting frame made of dull finished, heavy steel wire with welded joints. Soft tanned leather face and chin cushions laced to the frame. Adjustable elastic head straps. Each, \$7.50

No. 267—Clear vision. Wide ear protecting, dull finished, heavy steel wire frame with welded joints. Well padded face and chin cushions, leather sunshade laced to frame. Adjustable elastic web head straps. Each, \$5.50

No. 263—Especially designed for soft ball use. Exceptionally light in weight. Open vision frame. Black enameled wire with welded joints, padded leather forehead and chin cushions. Adjustable elastic straps. Each, \$4.25

No. 261—Baseball and Soft Ball Mask. A light weight mask popular for soft ball. Open vision frame of black steel wire, welded joints. Padded face and chin cushions laced to frame. Elastic web straps. Each, \$4.50

No. 257—Baseball and Soft Ball Mask. Same construction throughout as No. 261 but with suede-tex face and chin cushions. . . . Each, \$3.50

No. 254—Youths' Mask. Open vision style, black enameled wire with welded joints. Padded leather face cushions, leather forehead and chin piece. Elastic straps. Each, \$2.25

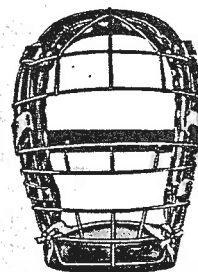
No. 250—For the small boy. Black enameled wire with welded joints. Leather face cushion. Elastic head piece. Each, \$1.50



No. 274



No. 263



No. 254



Junior Legion World's Champions 1934
Ft. Cumberland Post No. 13—Cumberland, Md.
Goldsmith Equipped